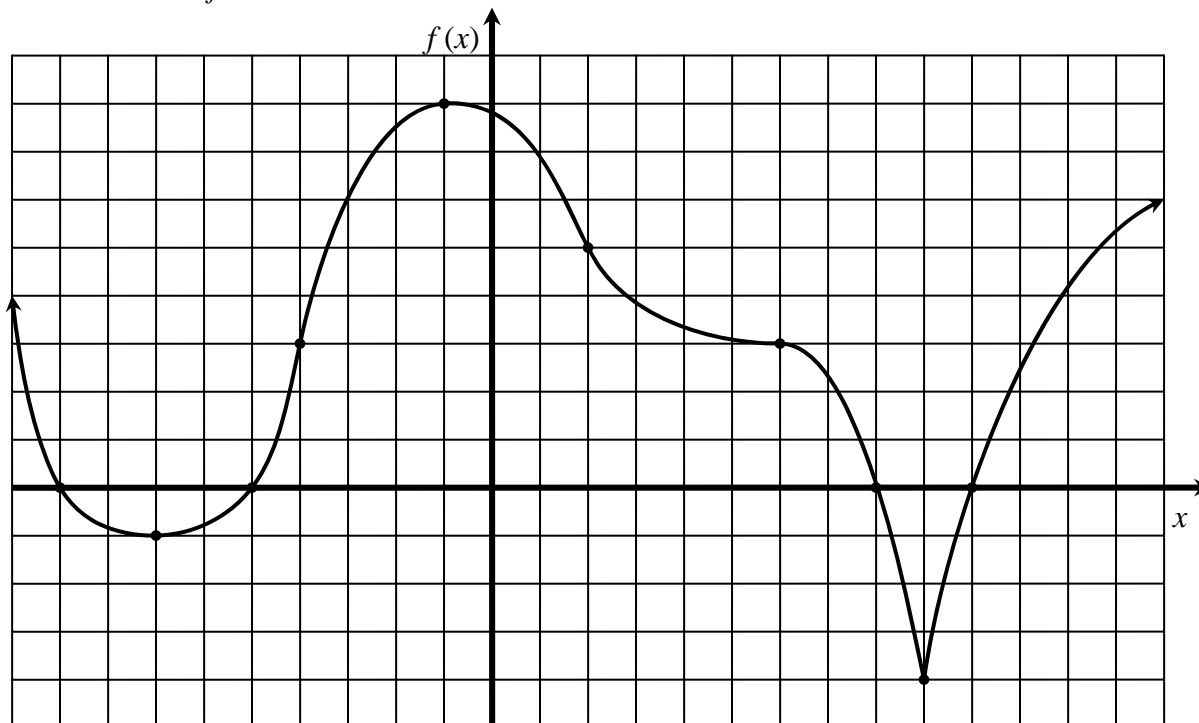


Math 163A Group Work 03: Identifying three kinds of graph behavior

The graph of a function f is shown below.



- 1) Where is f zero?
- 2) Where is f positive?
- 3) Where is f negative?
- 4) Where is f horizontal?
- 5) Where is f increasing?
- 6) Where is f decreasing?
- 7) Where is f not concave?
- 8) Where is f concave up?
- 9) Where is f concave down?