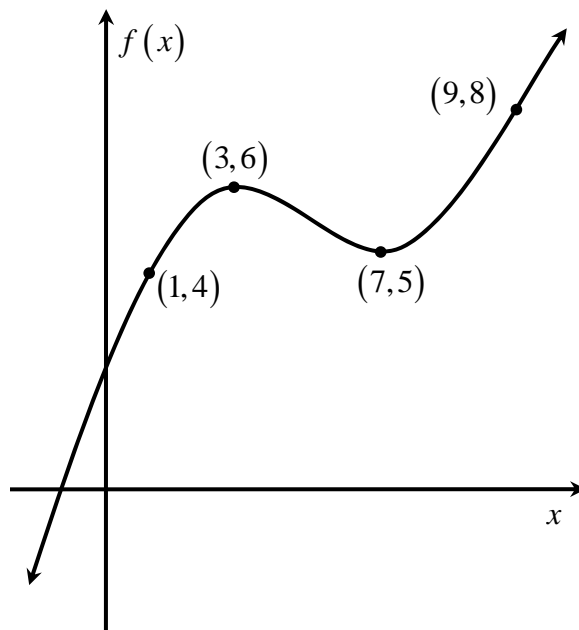


**Group Work 06: Relative and Absolute Extrema**  
 Math 163A (Barsamian), Monday, October 23, 2006

Here is the graph of a function  $f$ .



Fill in the table.

Interval	Relative Maxima in that interval	Relative Minima in that interval	Absolute Max in that interval	Absolute Min in that interval
$[1, 9]$				
$[1, 9)$				
$(1, 9]$				
$[3, 9]$				
$(3, 9)$				
$(-\infty, \infty)$				