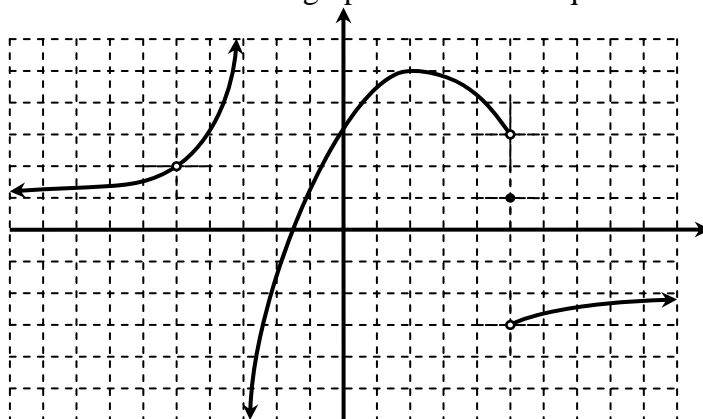


The graph of a function f is shown below. Use the graph to answer the questions that follow.



- 1) $\lim_{x \rightarrow -\infty} f(x) =$
- 2) $\lim_{x \rightarrow -5} f(x) =$
- 3) Explain your answer to question (2) by adding text and arrows to the figure above.
- 4) $\lim_{x \rightarrow -3^+} f(x) =$
- 5) $\lim_{x \rightarrow \infty} f(x) =$
- 6) Explain your answer to question (5) by adding text and arrows to the figure above.
- 7) $\lim_{x \rightarrow 5^+} f(x) =$
- 8) $f(5) =$
- 9) Use the three-part continuity test to determine whether or not f is continuous at $x = 5$. Show your work.