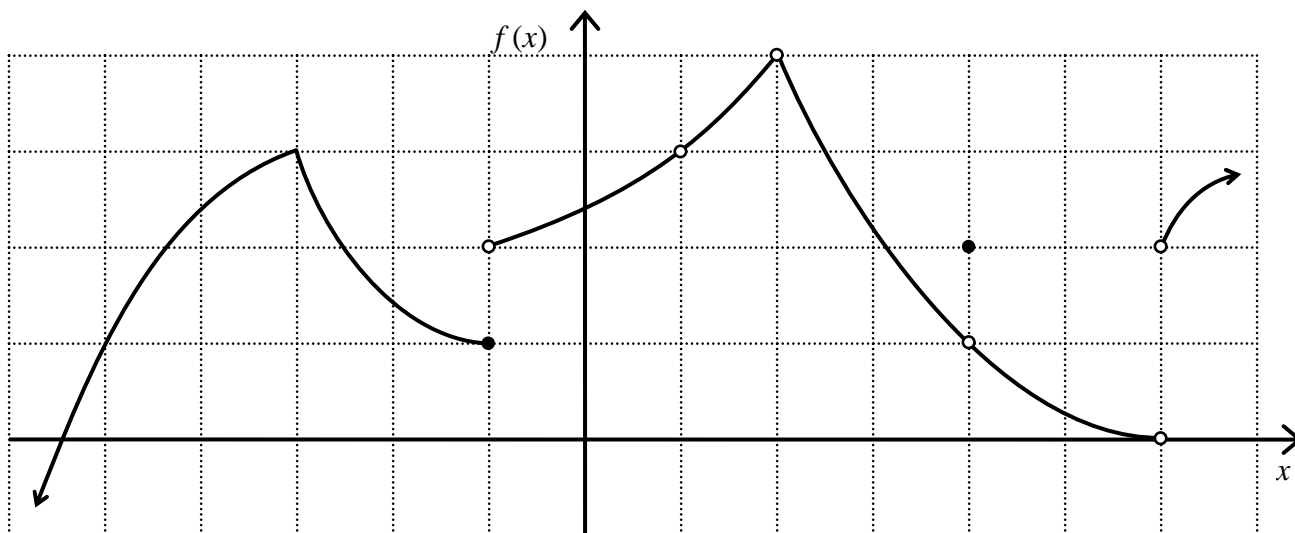


Math 163A Class Drill 1: Limits

Use the graph to fill in the table. (Extra copies of the graph are on back.)



x-value	limit from left	limit from right	limit	y-value
$x = -5$	$\lim_{x \rightarrow -5^-} f(x) =$	$\lim_{x \rightarrow -5^+} f(x) =$	$\lim_{x \rightarrow -5} f(x) =$	$f(-5) =$
$x = -3$	$\lim_{x \rightarrow -3^-} f(x) =$	$\lim_{x \rightarrow -3^+} f(x) =$	$\lim_{x \rightarrow -3} f(x) =$	$f(-3) =$
$x = -1$	$\lim_{x \rightarrow -1^-} f(x) =$	$\lim_{x \rightarrow -1^+} f(x) =$	$\lim_{x \rightarrow -1} f(x) =$	$f(-1) =$
$x = 1$	$\lim_{x \rightarrow 1^-} f(x) =$	$\lim_{x \rightarrow 1^+} f(x) =$	$\lim_{x \rightarrow 1} f(x) =$	$f(1) =$
$x = 2$	$\lim_{x \rightarrow 2^-} f(x) =$	$\lim_{x \rightarrow 2^+} f(x) =$	$\lim_{x \rightarrow 2} f(x) =$	$f(2) =$
$x = 4$	$\lim_{x \rightarrow 4^-} f(x) =$	$\lim_{x \rightarrow 4^+} f(x) =$	$\lim_{x \rightarrow 4} f(x) =$	$f(4) =$
$x = 6$	$\lim_{x \rightarrow 6^-} f(x) =$	$\lim_{x \rightarrow 6^+} f(x) =$	$\lim_{x \rightarrow 6} f(x) =$	$f(6) =$

