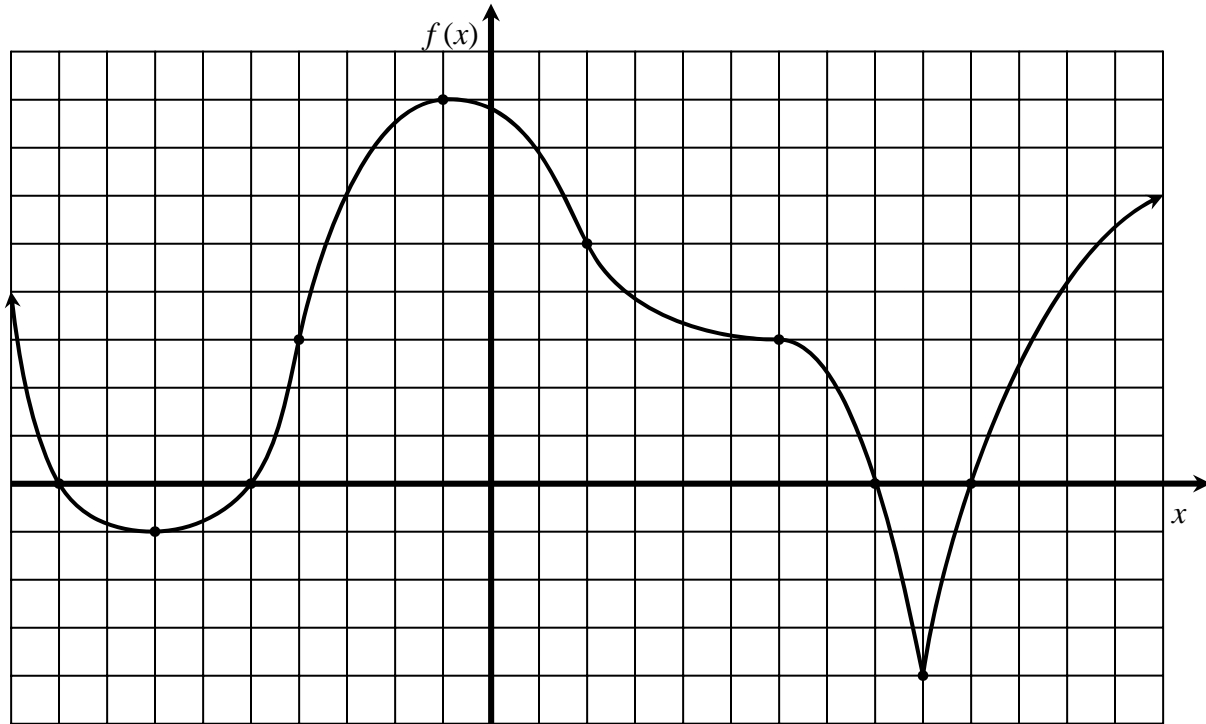


Math 263A Class Drill 8: Identifying three kinds of graph behavior

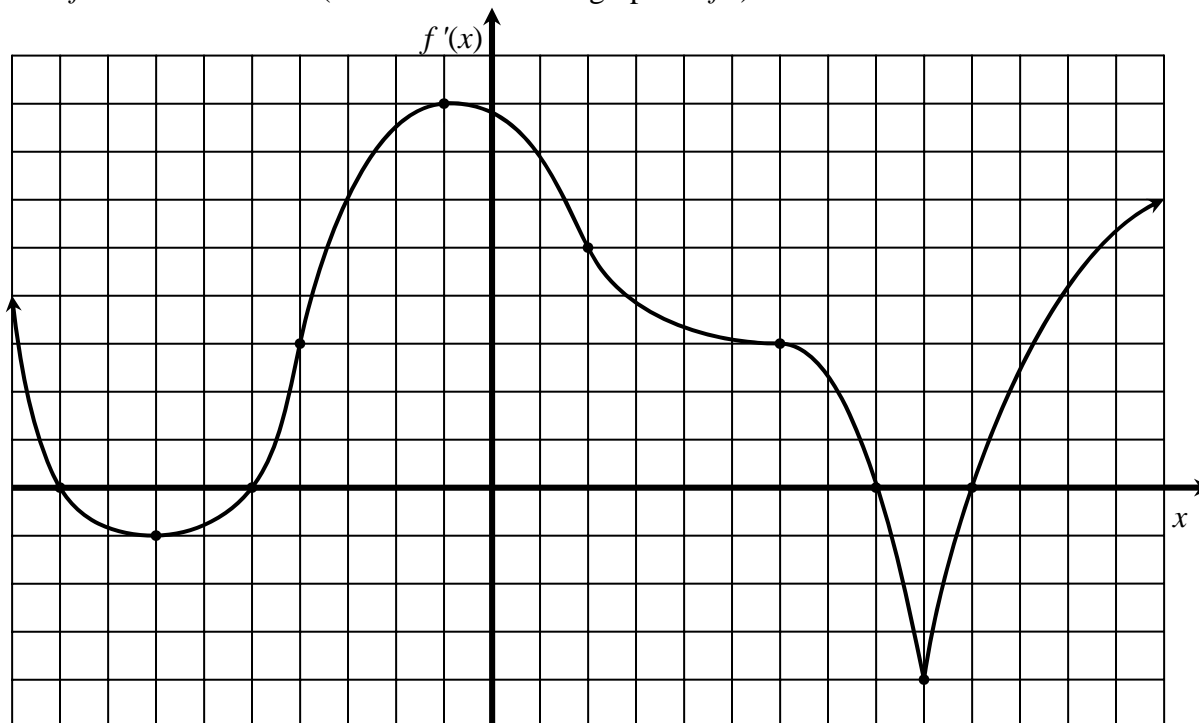
The graph of a function f is shown below.



- 1) Where is f zero?
- 2) Where is f positive?
- 3) Where is f negative?
- 4) Where is f horizontal?
- 5) Where is f increasing?
- 6) Where is f decreasing?
- 7) Where is f not concave?
- 8) Where is f concave up?
- 9) Where is f concave down?

Math 263A Class Drill 9: Using a graph of f' to answer questions about f

The graph of f' is shown below. (Note: this is not the graph of f !)



- 1) Where is f zero? (Trick question)
- 2) Where is f positive? (Trick question)
- 3) Where is f negative? (Trick question)
- 4) Where is f horizontal?
- 5) Where is f increasing?
- 6) Where is f decreasing?
- 7) Where is f not concave?
- 8) Where is f concave up?
- 9) Where is f concave down?
- 10) Where does f have a local max?
- 11) Where does f have a local min?
- 12) Where does f have a point of inflection?